

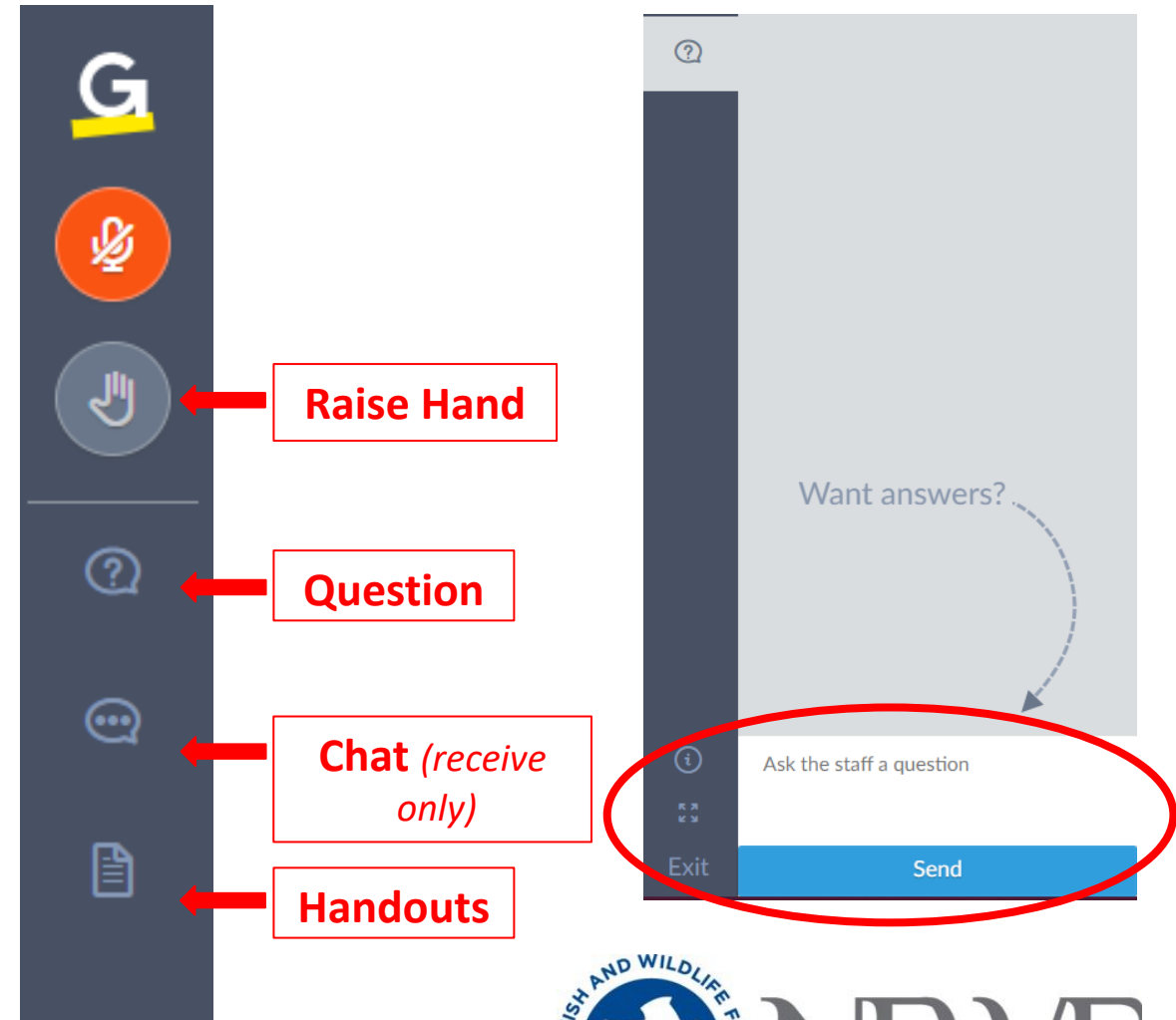
# WELCOME TO THE

# NATIONAL COASTAL RESILIENCE FUND RFP– 2024 FULL PROPOSAL WEBINAR

## We will get started momentarily ...

- To improve sound quality, all participants will be muted for the duration of the webinar. If you want to ask a question you have two options:
  - Enter your query where it says “Enter a question for staff” and click send. A NFWF staff member will type a response or read your question aloud when we pause for Q&A.
  - Write it down and contact us after the webinar. We have a lot of material to cover, so you may prefer to have a more in-depth discussion later.
- We may ask you to raise your “hand” in the webinar dialogue box to confirm participants can hear us.
- If you experience a technical glitch, please type it into the question box, since we can’t hear you. (We may not know about the glitch unless you say something!)

*The webinar recording will be sent to all participants via email.*







# National Coastal Resilience Fund

2024 Applicant Full Proposal Webinar

March 28, 2024



# INTRODUCTIONS

---

**Mirjam Kuzee**

Program Director, Coastal  
Resilience



**Arielle Mion**

Manager, Coastal  
Resilience



**Ross Weaver**

Manager, Coastal  
Resilience



**Christine Latil**

Manager, Coastal  
Resilience



# NATIONAL COASTAL RESILIENCE FUND WEBINAR

## **AGENDA**

---

Reviewer Feedback

The Application

Resources

Q&A



# NATIONAL COASTAL RESILIENCE FUND

Reviewer Feedback



# Advance use of **Nature-based Solutions (NBS)** to Coastal Risks

Reduce **exposure of communities** to coastal storms, flooding, erosion, and other coastal hazards



Enhance **habitat** important for **fish and wildlife**

Encourage Innovation

Ensure Project Sustainability

Promote Transferability





# Read Invitation Email

Many applicants received comments in their invitation email

Addressing all comments in the email will help improve your competitiveness



Cormorant , Manhattan Skyline



# Resilience Benefit

Clearly articulate the community resilience benefits. How will the project:

- Reduce risks from coastal hazards, like flooding and erosion
- “mitigate impacts...on key, local community assets (such as properties, infrastructure, and centers of economic activity)”
- Describe the importance of those assets to the community





# Clear Deliverables

Planning – a plan for increasing resilience including NBS site prioritization

Preliminary Design – produce a 30-60% design/“go, no-go” decision

Final Design – produce a 90-100% design and have robust conversations with permitters

Restoration Implementation – construct project and **MUST** include 1 year-post construction monitoring



# Planning Projects

Clearly identify the components of the Plan you will develop

Identify the types of NBS that will be explored for addressing identified coastal hazards

Identify how you will prioritize sites for NBS for **risk reduction and habitat benefits**

Show that the plan is actionable and will advance NBS projects for future stages of implementation

Tell us how you will engage the community in the planning effort





# Design Projects

How will the project help you advance NBS to next stages of implementation

- Preliminary Design should enable go/no-go decision
- Final Design should result in close to “shovel-ready” project

Talk about the regulatory context and how the project will help you engage regulators to get the project ready for implementation



Project Rendering, Cleveland, OH



NFWF



# Restoration- Implementation

Demonstrate that your project is “implementation-ready,” meaning you will be able to start construction within 1-year of the award date for your project (i.e., by the end of 2025/early 2026)

Tell us the status of permitting for your project

Provide a comprehensive project schedule



Crab Bank, SC



# Consider the Big Picture

How does your project fit into the broader context of resilience actions for your area including past, current and future plans? Clearly identify the local, state or region plan(s) under which the project has been prioritized.

Your project should be at a scale to have a tangible resilience and habitat benefits and/or should include a transferability component





# Partnerships & Technical Expertise

Talk about the project team and the broader partnership that will be supported through the project

Demonstrate that you have the technical expertise on the team to complete the Scope of Work (e.g., expertise to complete risk and vulnerability assessments, design NBS, etc.)

How will you engage decisionmakers



Design Charette, Tybee Island, GA



NFWF



# Match

- Non-federal match encouraged, but not required
- In-kind match COUNTS
  - Volunteer hours
  - In-kind support
  - Deferred indirect costs
- No priority given to higher cash percentages
- Must be specific to the scope of work for the project and within the period of performance

<b>Matching Contribution Amount:</b>	\$86,664.00
<b>Type:</b>	Cash
<b>Status:</b>	Received
<b>Source:</b>	[REDACTED]
<b>Source Type:</b>	Non-Federal
<b>Description:</b>	[REDACTED] will provide the underlying data on the utility of natural features in reducing storm damage. [REDACTED] will use private award funds from the [REDACTED]

<b>Matching Contribution Amount:</b>	\$2,500.00
<b>Type:</b>	In-kind
<b>Status:</b>	Received
<b>Source:</b>	[REDACTED]
<b>Source Type:</b>	Non-Federal
<b>Description:</b>	In kind match: vehicle use (i.e., fuel and vehicle maintenance costs) associated with assistant biologist's travel to [REDACTED] coastal wetlands for preliminary data collection to support structured prioritization process.

<b>Matching Contribution Amount:</b>	\$45,935.00
<b>Type:</b>	In-kind
<b>Status:</b>	Received
<b>Source:</b>	[REDACTED]
<b>Source Type:</b>	Non-Federal
<b>Description:</b>	In-kind match accounting for time (wages plus fringe) spent by assistant biologist working to document coastal wetlands, invasive species, marshbirds, and fish communities in wetlands of the [REDACTED] This will support decision process.



NFWF

# Budgets

Cost effectiveness

Average award estimates: Planning and Design grants \$100,000 - \$1 Million.

Restoration Implementation grants \$1 Million - \$10 Million

Support for engaging communities in project development



Miami-Dade County, Volunteer Restoration, Cutler Bay, FL



# NARRATIVE

Please do NOT exceed 8 pages  
Make sure to address ALL reviewers' comments

## Methods and Activities

- Elaborate on the primary activities that will be employed through the grant. Explain how these activities are expected to lead to the outcome(s). Describe how these activities relate to established plans (management, conservation, recovery, etc.) and priority conservation needs in the specific project location.

## Implementation Timeline and Milestones

- Elaborate on the outcome(s) summarized previously in the application; discuss what makes this outcome(s) achievable and important.

## Monitoring Project Impact

- Indicate how the project will monitor/assess progress on the metrics selected previously in the application. Please note any challenges or limitations anticipated with tracking the metrics.

## Project Team and Partners

- List key individuals and describe their qualifications relevant for project implementation. Include contractor information, if known.

### Most Competitive Narrative Elements:

- Program Goals and Priorities
- Technical Merit
- Partnership
- Transferability
- Communication
- Funding Need
- Conservation Plan and Context
- Monitoring
- Long-term Sustainability
- Past Success
- Key Personnel





# NATIONAL COASTAL RESILIENCE FUND

Application



# Monitoring Metrics and Protocols (for Restoration Implementation ONLY)

## National Coastal Resilience Fund: Project Monitoring Plan Template

Use the following tables to provide information on the monitoring requested by NFWF for the type of restoration work you are proposing, even if the monitoring will be funded by other sources than your NFWF grant. You MUST use the associated appendix table to help you fill out the tables for your project.

### Monitoring approaches for Marsh Restoration and/or Living Shorelines

[You must use Appendix A to complete this table]

Marsh Restoration and/or Living Shorelines					
Metric (include units)	Difference to Recommended Methods and Protocols (if any)	Spatial extent of metric monitoring	Baseline yr	Frequency/Timing	Data Limitations/Considerations
Percent Cover of biomass by species or cover type (% ranging from 0-100)					
Elevation (cm)					
Shoreline Position					
Water level					
Oyster reef restored (acres)[if applicable]					

### Monitoring approaches for Beach/Dune Restoration

[You must use Appendix B to complete this table]

Beach and Dune Restoration					
Metric (include units)	Difference from Recommended Methods and Protocols (if any)	Spatial extent of metric monitoring	Baseline yr	Frequency/Timing	Data Limitations/Considerations
Shoreline position (cm)					
Beach width (cm)					
Elevation (cm)					

## Appendix A: Metrics and Methods for Monitoring Marsh/Living Shoreline Restoration

**Monitoring Overview:** Use permanent transects perpendicular from the shore line with quadrat plots to sample changes in plant community, water encroachment and changes in elevation over time.

### General guidelines for using transects and quadrats method:

- These guidelines are relevant for the following metrics: Percent cover of biomass, Elevation, and Shoreline position.
- Initial placement of transects must be random and stratified, and then quadrats are placed along those transects. Be sure to capture the edge.
- Transects should capture the seaward edge of marsh vegetation, capture transition zones in elevation or vegetation, and continue through the upper marsh or approximate MHHW, different elevations, upper elevation, and different regions within the site.
- Use 1 m<sup>2</sup> plots.
- Use ~25-50 plots, depending on the size of the project.
- Permanent plots are preferred, as they facilitate capturing change over time, and once established they reduce sampling time. However, be careful when walking across the same areas over time as this can result in visible damage to the restoration. Be sure to avoid walking within the plot area itself.
- If there are unique vegetation zones (i.e. low marsh, high marsh, etc.) it may be valuable to use a stratified random design (where the strata are the vegetation/elevation zones) with randomization occurring within each strata. For example, if there are two zones of relatively equal size and 6 quadrats total, three would be placed at randomly determined locations (along the transect) within each zone. If zones are substantially different in width, it may be worth distributing the sample plots proportionally.

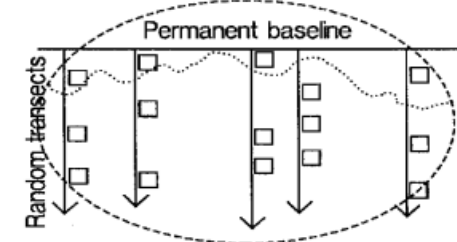


Figure 1: Sketch of random transects and quadrats

### Guidelines for estimating Percent Cover of Biomass:

- Identify all plant species found in the quadrat. For each species, estimate and record the total percent cover by category (1-9 according to the NCVS vegetation categories outlined below; Peet et al. 1998). Using the same coverage categories, identify and record the cover of live oyster, live mussels, and wrack.

Cover Range	NCVS category
Solitary/Few/Small	1
0.1-1%	2

# Special Upload

- Special upload required for projects applying for:
  - DOD Funding
  - Equipment Purchases (Defined as items with a unit cost of more than \$10,000)
  - Acquisition of land
- Special Upload is maximum of **one page!**
- **For DOD funding** – leave your responses from the pre-proposal stage and expand on your responses per the instructions.
- To make room, you can delete the instructions at the top of page and the bulleted prompts below the headings.



## NCRF FULL PROPOSAL – *Special Upload Template*

**Instructions:** At the full proposal stage, applicants seeking funding for **ACQUISITIONS** or **EQUIPMENT** and/or **DEPARTMENT OF DEFENSE** funding **MUST** complete a **one-page special upload** answering the questions applicable to their project. This one-page special upload is in addition to your 8-page full proposal narrative. Save this template to your computer and complete these specific questions, where applicable, in the format provided. You may edit and expand on your pre-proposal answers here. The page limit for the special upload is **(1) page**. Please retain the applicable headings in bold. You may delete these instructions and the bulleted prompts, below the heading(s). Once complete, upload this document into the online application as instructed.

### 1. **Projects Seeking Funding for ACQUISITIONS or EQUIPMENT:**

- Provide a rationale for why NFWF funding for these project elements is needed to support project activities.
- For **equipment**, describe why equipment rental is not an option and your plan for complying with federal requirements related to purchase of equipment. Please include cost estimates.
- For **acquisitions**, describe why acquisition is needed to support restoration / resilience activities.
  - Provide a rough estimate of the budget needed to pay for acquisition costs and describe why acquisition or purchase cannot be supported through other sources (federal or state programs, donation, leasing, etc.).
  - Describe in detail the ENTIRE transaction, communicating step-by-step pieces of the acquisition and the status of negotiations with landowners (i.e. total purchase price needed and how the price was determined, expected expenses, sources of revenue, who is selling the property, who will purchase the property, what entity will be the long-term manager of the property, how will the property be held, what deed restrictions if any will apply, etc.).
  - Please also describe plans for ensuring public access.
- Provide any further information important for the review of this request in your proposal.

### 2. **For Projects Requesting U.S. DEPARTMENT OF DEFENSE (DOD) Partner Funding:**

- Applicants who have questions regarding DOD funding may contact the REPI Office at [osd.repi@mail.mil](mailto:osd.repi@mail.mil).
- Provide a description of the coastal hazards that threaten the military mission, the nature-based solution(s) proposed to address those threats, how those solutions will maintain and improve military resilience and/or directly benefit mission capabilities (see the RFP Funding Availability and Match section for more information).
  - Clearly explain any support needed by the lead Military Service to assist with completing all necessary regulatory permitting, environmental analysis, and cultural and historic property consultations.
  - **For the pre-proposal**, provide the contact information (name, organization, email, and phone number) of the installation personnel who are part of the project team and support the proposed project efforts.
  - **For the full proposal (by invitation only)**, include an endorsement letter from the lead Military Service, such as the installation commanding officer, to affirm support for the proposed activities. If there are multiple installations benefiting from the project, such as a regional or multi-state Sentinel Landscape, applicants should work with all Military Services involved to identify one lead Military Service in the application. The lead Military Service's endorsement letter serves as confirmation that DOD is aware of and accepts responsibilities for ensuring documentation of compliance (e.g., permitting, consultations) is complete before these activities are initiated.



# Benefits to Underserved and Stakeholder Engagement

Tell us about the community that will be benefitted by the project. Be sure to include specific community demographic information about factors that contribute to community vulnerability (e.g., poverty or unemployment rates).

Be clear about your plans for stakeholder engagement including relevant agencies, public groups, the community, etc. Note that we prioritize projects with “DIRECT community engagement”



NFWF

# Demographics

- 1. EPA's EJScreen
- 2. US Census Data
- 3. US Census Quick Facts Page
- 4. American Community survey
- 5. State data sources

**\*Provide Percentages NOT Percentiles!**

The screenshot shows the EPA's EJScreen website. At the top, there is the EPA logo and a search bar. Below the navigation bar, the main heading reads "EJScreen: Environmental Justice Screening and Mapping Tool". A prominent blue callout box with a red arrow pointing to it contains the text "Launch the EJScreen Tool" and "Explore EPA's environmental justice screening and mapping tool". The background image depicts a group of diverse children running happily in a field of yellow wildflowers. Below the image, a paragraph explains that EPA has developed this tool to better meet its responsibilities for public health and the environment, based on nationally consistent data and an approach combining environmental and demographic indicators.









# EJScreen Demographics

**EPA EJScreen** EPA's Environmental Justice Screening and Mapping Tool (Version 2.2) [EJScreen Website](#) | [Mobile](#) | [Glossary](#) | [Help](#)

*Please note: Territory data (except Puerto Rico) is not available as comparable to the US. It is only comparable to the territory itself by using the 'Compare to State' functionality. Likewise, some of the indicators may not be available for*

Compare to US  Compare to State

**Environmental Justice Indexes**

Supplemental Indexes

Pollution and Sources

Socioeconomic Indicators

Health Disparities

Climate Change Data

Critical Service Gaps

Additional Demographics

Threshold Map

**Chart or Report** ✕

Name:

Buffer:

[Explore Reports...](#)

[EJScreen Community Report](#) ←

[Delete this site](#)


Esri Community Maps Contributors, DCGIS, M-NCPPC, VGIN, Esri, TomTom, Garmin, SafeGraph, GeoTechnologies, Inc, METI/NASA, USGS, EPA, NPS, US Census Bureau, USDA, USFWS Powered by Esri

# EJScreen Demographics

**Remember -  
Percent NOT  
Percentiles!**

SOCIOECONOMIC INDICATORS					
Demographic Index	31%	42%	38	35%	52
Supplemental Demographic Index	10%	12%	50	14%	36
People of Color	38%	59%	32	39%	57
Low Income	21%	24%	55	31%	39
Unemployment Rate	4%	7%	47	6%	48
Limited English Speaking Households	5%	3%	81	5%	76
Less Than High School Education	3%	7%	47	12%	26
Under Age 5	2%	6%	28	6%	20
Over Age 64	10%	13%	48	17%	25
Low Life Expectancy	12%	21%	6	20%	3

# NCRF - Applicant Controls Questionnaire

**APPLICANT CONTROLS AND CAPABILITIES QUESTIONNAIRE** 

**INSTRUCTIONS:** The Applicant Controls Questionnaire (Questionnaire) is required with the submission of a NFWF full proposal. An authorized representative with adequate knowledge of your organization's capability, competence, resources, policies, and procedures should complete and sign the Questionnaire and submit it along with your organization's most recent Single Audit Report (if applicable). Please do not include copies of policies and procedures unless requested.

NFWF utilizes this Questionnaire to perform a risk assessment and determine an organization's eligibility and capacity to manage a NFWF award. Negative responses do not mean an organization is not eligible for an award. Depending on the type of award and the responses herein, NFWF may require additional documentation and/or reporting requirements to raise an organization's capacity and mitigate any potential compliance, audit, financial, or programmatic risks.

**ORGANIZATION LEGAL NAME:** \_\_\_\_\_

**ORGANIZATION EIN:** \_\_\_\_\_

**ORGANIZATION UEI:** \_\_\_\_\_

**Audits and U.S. Federal Funding Experience:** The following information provides insight into your organization's experience and performance in administering past awards.

1. Does your organization have a current Single Audit report (within the last two years) on file with the Federal Audit Clearinghouse?  
 Yes  
 No
2. If you responded "Yes" above, does your organization's most recent Single Audit report include any audit findings, material weaknesses, and/or significant deficiencies? If yes, please describe whether your organization has implemented the recommended corrective actions to address the findings. If you responded "No" above, select "N/A".  
 Yes  
 No  
 N/A  
  
Enter response here.
3. Has your organization been suspended or debarred from any government contracting process? If yes, please explain if the suspension and debarment are still in effect.  
 Yes  
 No

**ALL Applicants must  
now complete the  
full form**





# NATIONAL COASTAL RESILIENCE FUND

Resources



SUMMARY

**APPLICATION INFORMATION**

PROGRAM INFORMATION

## Application Information

02/22/2024	National Coastal Resilience Fund 2024 Request for Proposals	<a href="#">VIEW NOW</a>
06/12/2023	Full Proposal Applicant Easygrants Walkthrough Recording	<a href="#">VIEW NOW</a>
02/24/2023	2023 NCRF Applicant Easygrants Walkthrough	<a href="#">VIEW NOW</a>
06/20/2023	2023 Full Proposal FAQ	
03/15/2023	Frequently Asked Questions (FAQ)	<a href="#">VIEW NOW</a>
04/13/2023	NCRF Technical Reviewer	<a href="#">VIEW NOW</a>
02/24/2023	NCRF Field Liaison Support	<a href="#">VIEW NOW</a>
02/28/2023	Coastal Resilience Evaluation and Siting Tool (CREST)	<a href="#">VIEW NOW</a>
02/07/2020	NOAA's Digital Coast Resources (NCRF)	<a href="#">VIEW NOW</a>

ALL PROGRAMS

# National C

In This Section:

National Coastal Resilience Fund 2024 Request for Proposals

Roseate spoonbill

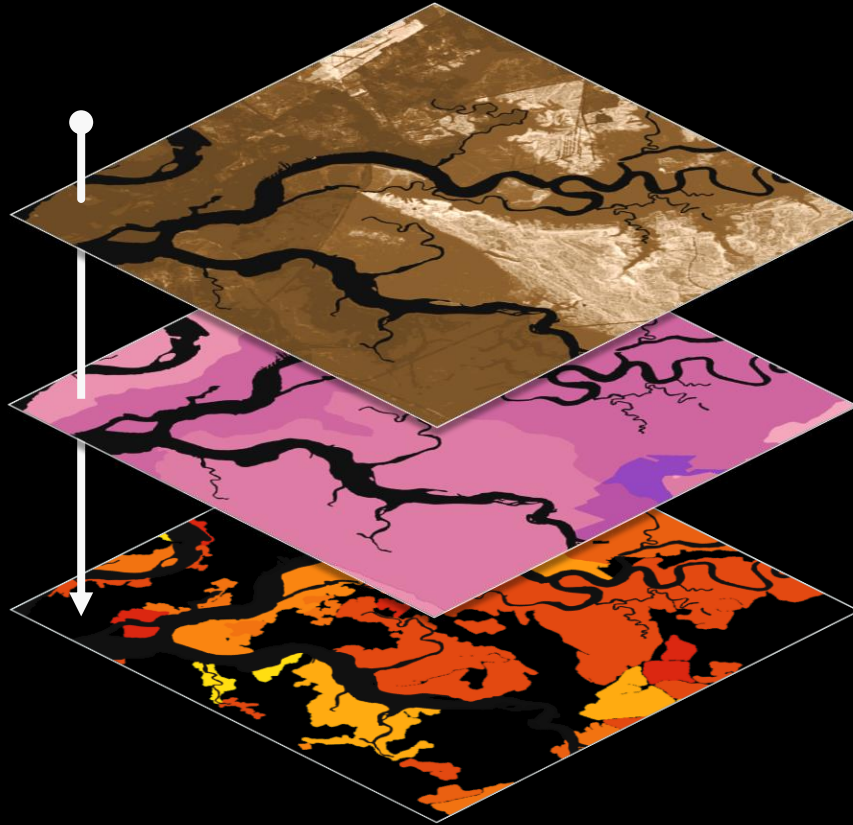
Targeted Water Assessments >

# REGIONAL COASTAL RESILIENCE ASSESSMENTS

Community Exposure Index  
Community Assets Exposed to Flood Threats

Fish & Wildlife Index  
Terrestrial & Aquatic Species of Concern

Resilience Hubs  
Open Space Areas of Dual Benefit



Identify areas on the landscape where nature-based solutions may maximize *fish and wildlife* benefits and *human community resilience* to flooding threats



NFWF



UNC ASHEVILLE

NEMAC  
NATIONAL ENVIRONMENTAL  
MODELING & ANALYSIS CENTER





## Coastal Resilience Evaluation and Siting Tool (CREST)

CREST is used to make informed decisions about the siting of coastal restoration and resilience projects. The tool identifies Resilience Hubs, which are areas of open space where projects may have the greatest potential to benefit both human community resilience and fish and wildlife. Resilience Hubs incorporate multiple indices, all of which are available in CREST.

Select a region to start using CREST

Alaska



Alaska

American Samoa



American Samoa

Continental U.S.



Continental U.S.

Guam



Guam

Hawai'i



Hawai'i

Northern Mariana Islands



Northern Mariana Islands

Puerto Rico



Puerto Rico

U.S. Virgin Islands



U.S. Virgin Islands

[resilientcoasts.org](https://resilientcoasts.org)

# National Coastal Resilience Fund 2024 Request for Proposals

Home / Programs / National Coastal Resilience Fund / ...



National Coastal Resilience Fund 2024

Meet

## Apply for a Grant

Application Information Recipient Information Grants Library



The National Fish and Wildlife Foundation provides funding on a competitive basis to projects that sustain, restore and enhance our nation's fish, wildlife and plants, and their habitats.

Each of our initiatives has a [business plan](#) developed by scientists and other experts, and approved by our Board of Directors. Grants are available to support the actions identified in the business plan. Additional programs support diverse projects for wildlife and habitat conservation across the country.

Browse NFWF's [conservation programs](#) and learn how to [apply for a grant](#).



Pre-Proposal Webinars\*:

Pre-Proposal Due Date:

Full Proposal Invitations:

Full Proposal Webinar:

Full Proposal by Invite  
Only Due Date:

Award Announced:

*\*Note: Three identical pre  
various time zones. Please*

### OVERVIEW

The National Fish and Wildlife Foundation (NFWF) is pleased to announce the 2024 National Coastal Resilience Fund (NCRF) Request for Proposals (RFP). NFWF will make investments in planning,

#### Take Note!

- **Pop-ups:** Easygrants uses pop-up windows to display some files. Please make sure your web browser allows for pop-ups. The internet browser pop-up blocker must be disabled prior to beginning the application process. You can also try holding the Shift or Control (CTRL) key when clicking the link.
- **Cookies:** Easygrants uses cookies to maintain the session information. Please make sure that your browser and computer can accept cookies.
- **PDF:** Easygrants uses PDFs extensively. Make sure you are able to use Adobe Reader.
- **SAVING AND SUBMITTING:** Once an application has been initiated, it may be saved and then modified and submitted at a later time, up to the application deadline of **April 10, 2024 11:59 PM Eastern Standard Time**. Note: Please DO NOT hit the "Submit" button until you are ready to submit. Once you hit submit the application is formally submitted and you may no longer make changes.

Easygrants application (this person is tagged as the "Add" button and entering their information

ch by Name, EIN number, or UEI number. When ensure your return list is comprehensive. Also, suits and you may need to narrow your search. (numbers). If Easygrants informs you that your n, please contact [Easygrants@nfwf.org](mailto:Easygrants@nfwf.org) for support ants, click the "Add New" button at bottom of list and

# NEED TECHNICAL ASSISTANCE?

---

Throwe Environmental and Native American Fish and Wildlife Society (NAFWS) have contracted with NFWF to serve as national Field Liaisons for NCRF. Field Liaisons supports NCRF applicants by:

- Promoting climate resilience and the NCRF program
- Helping applicants develop competitive proposal ideas
- Following up with proposals not selected for funding
- Supporting existing grantees through check-ins and troubleshooting

## Questions?

Email Chris Cortina [chris@throwe-environmental.com](mailto:chris@throwe-environmental.com) or Megan Hawkins [mhawkins@nafws.org](mailto:mhawkins@nafws.org)

[www.nfwf.org/ncrf-field-liaison-support](http://www.nfwf.org/ncrf-field-liaison-support)

## **Field Liaison team:**

Throwe Environmental (TE)  
Native American Fish and  
Wildlife Society (NAFWS)





# 2024 NCRF TIMELINE



**Feb22**

RFP Released



**Apr10**

Pre-Proposals  
Due



**End of May**

Full Proposals  
Invited



**Jun6**

Full Proposal  
Webinar



**Jul2**

Full Proposals  
Due (invite only)



**Late Nov**

Awards  
Announced



NFWF

**Questions about the RFP or Easygrants:**

**Email:** [NCRF@nfwf.org](mailto:NCRF@nfwf.org)

Mirjam Kuzee  
*Program Director, Coastal Resilience*

Arielle Mion  
*Program Manager, Coastal Resilience*

Christine Latil  
*Program Manager, Coastal Resilience*

Ross Weaver  
*Program Manager, Coastal Resilience*

**Easygrants Helpdesk:**

**Email:** [easygrants@nfwf.org](mailto:easygrants@nfwf.org)

**Voicemail:** 202-595-2497

**Region-specific questions:**

***If you have a question about...***

***Please contact...***

Northeastern states (ME, MA, CT, RI, NY)

John Wright,  
[John.Wright@nfwf.org](mailto:John.Wright@nfwf.org)

Mid-Atlantic states (NJ, PA, DE, MD, VA)

Tori Sullens,  
[Tori.Sullens@nfwf.org](mailto:Tori.Sullens@nfwf.org)

Southeastern and Gulf States (NC to TX)

Will Singleton,  
[Will.Singleton@nfwf.org](mailto:Will.Singleton@nfwf.org)

California

Femke Freiberg,  
[Femke.Freiberg@nfwf.org](mailto:Femke.Freiberg@nfwf.org)

Washington and Oregon

Alexander Mahmoud,  
[Alexander.Mahmoud@nfwf.org](mailto:Alexander.Mahmoud@nfwf.org)

Alaska

Jana Doi  
[Jana.Doi@nfwf.org](mailto:Jana.Doi@nfwf.org)

Great Lakes

Aislinn Gauchay,  
[Aislinn.Gauchay@nfwf.org](mailto:Aislinn.Gauchay@nfwf.org)

Hawaii, Caribbean and Pacific territories

Michelle Pico,  
[Michelle.Pico@nfwf.org](mailto:Michelle.Pico@nfwf.org)

**Throwe Environmental**

*NCRF Field Liaisons*

[nrcf@throwe-environmental.com](mailto:nrcf@throwe-environmental.com)

**Native American Fish and Wildlife Society**

*NCRF Field Liaisons for Tribal Organizations*

Megan Hawkins, [mhawkins@nafws.org](mailto:mhawkins@nafws.org)