



Northern Great Plains Program

NFWF CONTACTS

Seth Gallagher

Director,
Grasslands and Mountain West
seth.gallagher@nfwf.org
303-222-6483

Daley Burns

Manager,
Rocky Mountain Regional Office
daley.burns@nfwf.org
202-595-2440

PARTNERS

- Bezos Earth Fund
- Margaret A. Cargill Philanthropies
- Altria
- Cargill
- Nestlé
- Sysco
- Burger King
- Capri Holdings Ltd
- Occidental
- Marathon Oil
- U.S. Fish and Wildlife Service
- US Forest Service
- Bureau of Land Management
- USDA Natural Resources Conservation Service

ABOUT NFWF

Chartered by Congress in 1984, the National Fish and Wildlife Foundation (NFWF) protects and restores the nation's fish, wildlife, plants and habitats. Working with federal, corporate and individual partners, NFWF has funded more than 6,800 organizations and generated a total conservation impact of more than \$10 billion. NFWF is an equal opportunity provider.



Mule deer

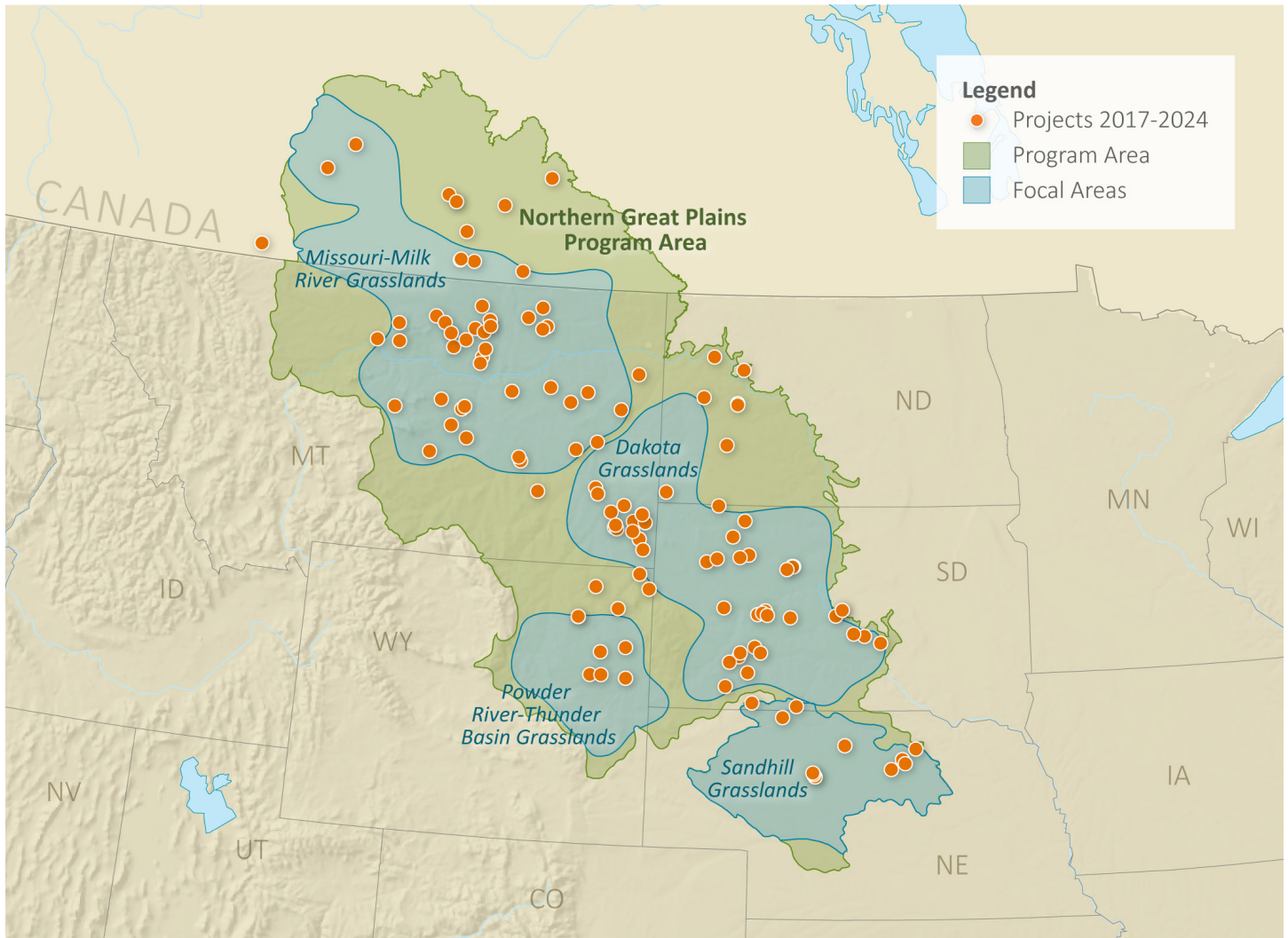
BACKGROUND

The vast grasslands of the Northern Great Plains support an assemblage of wildlife adapted to the wide-open spaces. Thanks to generations of land stewardship by ranchers, Tribes and public agencies, much of the Northern Great Plains remains as native grassland that is productive for people and wildlife.

Despite changes to the landscape, uniquely adapted grassland species continue to co-exist. Thousands of sage-grouse, with their distinctive leks and mating dance, are scattered across the landscape. Herds of pronghorn migrate widely across the open country between their summer and winter habitats. A variety of bird species found nowhere else in the world migrate from the southern United States and Mexican grasslands to the short- and mixed-grass prairies of the Northern Great Plains to breed and raise their young. The National Fish and Wildlife's (NFWF) Northern Great Plains Program works through public-private partnerships to sustain and improve interconnected grasslands and healthy populations of grassland-obligate species, while fostering sustainable livelihoods and preserving cultural identities.

Major funding partners include Bezos Earth Fund, Margaret A. Cargill Philanthropies, Altria, Cargill, Nestlé, Occidental, Marathon Oil, U.S. Fish and Wildlife Service, U.S. Forest Service, Bureau of Land Management and USDA Natural Resources Conservation Service. Since 2016, the program has funded 162 projects for a total investment of more than \$62.8 million, which has been leveraged by more than \$118.1 million for a total on-the-ground impact of \$180.9 million.

(continued)



CONSERVATION IMPACT

As identified in the Northern Great Plains Business Plan, the program seeks projects that address the following desired outcomes.

Demonstrate successful models for grassland habitat conservation that:

- Increase grasslands connectivity through permanent conservation efforts such as conservation easements and grass banking that maintain working ranches and restrict subdivision and sod-busting activities
- Increase grasslands through habitat restoration efforts (reseeding, removal of woody invasives, prescribed fire, etc.)
- Improve management at large scales that facilitates persistent long-term behavioral changes that benefit grasslands and focal species

Improve population levels and related outcomes for grassland species through projects that:

- Identify and address limiting factors for grassland obligate songbirds such as Baird's sparrow, Sprague's pipit, chestnut-collared and thick-billed longspur, and lark buntings

- Promote black-footed ferret conservation through the distribution of sylvatic plague vaccine in targeted prairie dog colonies
- Improve landscape permeability for pronghorn by removing and modifying fence and installing structures to minimize mortality at road crossings and bottleneck sites
- Sustain populations of greater sage-grouse through restoration of meadows and removing or marking fencing around key leks in Sage-Grouse Focal Areas

CONSERVATION IMPACT

Applications for projects that make investments in focal areas based on partner interests and conservation opportunities will be accepted through annual requests for proposals that will occur in the late summer or early fall. Eligible applicants include nonprofit, tribal and governmental conservation entities in the region. Since 2016, our investments in the Northern Great Plains have restored more than 458,300 acres, removed or improved 812 miles of fencing to wildlife-friendly specifications, placed more than 838,400 acres under conservation easement and improved management on nearly 4.6 million acres of habitat.